



imageRUNNER  
ADVANCE DX  
C5870i / C5860i  
C5850i / C5840i

## imageRUNNER ADVANCE DX C5800 Series

Color  
Mid-volume  
Multifunction

Print up to 70 ppm (BW/color)

Scan up to 270 ipm (300 dpi) (BW/color, duplex)

Print up to 12" × 18"

6,350-sheet maximum paper capacity

Canon's comprehensive portfolio of imageRUNNER ADVANCE DX multifunction printers and integrated solutions can help **simplify** the end user experience and management of technology, better **control** sensitive information and print-related costs, and help ensure that technology investments proactively **evolve** with changing needs.



### WORKFLOW EFFICIENCY

- 10.1" intuitive touchscreen with smartphone-like usability.
- A unique, customized experience tailored to individual preferences using My ADVANCE.
- Supports mobile solutions and integration with many popular cloud services like Google Drive.<sup>1</sup>
- Scan and convert documents to searchable digital files in a variety of file formats.
- Integration with Canon and various third-party software with embedded application platform.
- Hot Folders allow users to drag and drop a file into a hot folder and automatically print with pre-defined settings such as number of copies and finishing requirements.



### SECURITY

- Advanced standard security feature set to help safeguard sensitive information and assist in regulatory compliance.
- Integrates with existing, third-party SIEM\*<sup>2</sup> systems to help provide real-time, comprehensive insights into potential threats to the network and printers.
- Technology to verify that the device boot process, firmware, and applications initialize without alteration at startup. McAfee Embedded Control<sup>3</sup> utilizes a whitelist to protect against malware and tampering of firmware and applications.
- Security policy settings can be controlled with a dedicated password, configured from a central location, and exported to other supported devices.
- Control access to the device and specific features, using a host of flexible authentication methods—PIN code, user name/password, or card access.<sup>4</sup>



### QUALITY AND RELIABILITY

- Canon's signature reliability and engine technologies help keep productivity high and minimize the impact on support resources.
- Outstanding imaging technologies and toner allow for consistently striking images, thanks to Canon's V<sup>2</sup> color profile.
- Designed to achieve maximum uptime with status notifications that help keep supplies replenished and intuitive maintenance videos for consumables replacement.
- imageRUNNER ADVANCE models have received many awards and recognition from leading industry analysts, often referencing strong reliability.

\* Security Information and Event Management.



## DEVICE AND FLEET MANAGEMENT

- Designed for quick, easy deployment.
- Remote diagnostics and parts life management for proactive maintenance and rapid fixes.
- Easy and intuitive to monitor device status and consumable levels, turn off devices remotely, observe meter readings, manage settings, and implement security policies.
- Common firmware and regular updates with Unified Firmware Platform (UFP) for continuous improvements and consistency across a fleet.



## COST MANAGEMENT

- Track and assess print, copy, scan, and fax usage and allocate costs to departments or projects.
- Apply print policies and restrict usage by user to help reduce unnecessary printing and contribute to cost efficiency.
- Standard cloud-based solution provides a centralized dashboard with up-to-the-minute insights into printer activity.
- Upgrade to uniFLOW server or cloud-based solutions for full accounting and reporting for compatible Canon and third-party devices, pull printing, job routing, and powerful scan workflows.



## SUSTAINABILITY

- A combination of fusing technologies and low-melting-point toner minimizes power requirements and helps achieve low energy consumption.
- Encourage environmentally conscious work practices by enabling multiple settings that can help save paper and energy.
- ENERGY STAR® certified and rated EPEAT® Gold<sup>5</sup>

## CONFIGURATION OPTIONS

## imageRUNNER ADVANCE DX C5800 Series



### STAPLE FINISHER-AB2\*

- 2-tray, 3,250-sheet capacity
- Corner and double stapling up to 50 sheets
- Supports Staple-Free Stapling (up to 10 pages, 17 lb. Bond) and Staple on Demand
- Supports optional internal 2/3-hole puncher (2/3 Hole Puncher Unit-A1)



### BOOKLET FINISHER-A1 WITH TRI-FOLD\*

- 2-tray, 3,250-sheet capacity
- Corner and double stapling up to 50 sheets
- Booklet-making up to 20 sheets and saddle-folding up to 3 sheets
- Supports Staple-Free Stapling (up to 10 pages, 17 lb. Bond) and Staple on Demand
- Supports optional internal 2/3-hole puncher (2/3 Hole Puncher Unit-A1)
- Built in C-Fold up to 5 sheets



### INNER FINISHER-L1

- 2-tray, 550-sheet capacity
- Corner and double stapling up to 50 sheets within the footprint of the main unit
- Supports Staple-Free Stapling (up to 10 pages, 17 lb. Bond) and Staple on Demand
- Supports optional internal 2/3-hole puncher (Inner 2/3 Hole Puncher-D1)



### INNER 2-WAY TRAY-MI



### BUFFER PASS UNIT-P2



### PAPER FOLDING UNIT-L1\*\*

- Offers Z-Fold



### HIGH CAPACITY CASSETTE FEEDING UNIT-C1

- 2,450-sheet capacity
- Supports up to Letter
- 14 lb. Bond to 140 lb. Index

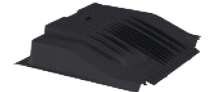


### CASSETTE FEEDING UNIT-AQ1

- Two 550-sheet cassettes
- Supports up to 12" x 18"
- 14 lb. Bond to 140 lb. Index



### CABINET TYPE-V



### INNER TRAY\*



### COPY TRAY KIT



### PAPER DECK UNIT-F1

- 2,700-sheet capacity
- 14 lb. Bond to 140 lb. Index
- Supports Letter



### imagePASS-R1

- Delivers fast processing speed, outstanding image quality, and time-saving workflow
- Personalized printing with the built-in, entry-level Fiery FreeForm™ or with the supported variable data printing (VDP) formats

\* Requires Buffer Pass Unit-P2.  
 • Required when Staple Finisher-AB2/Booklet Finisher-A1 with Tri-Fold or Inner Finisher-L1 is not installed.  
 • Requires Buffer Pass Unit-P2 and either Booklet Finisher-A1 with Tri-Fold or Staple Finisher-AB2.

## Main Unit

### Type

Color Laser Multifunctional

### Core Functions

Standard: Print, Copy, Scan, Send, Store  
Optional: Fax

### Control Panel

10.1" TFT LCD WSVGA Color Flat-panel

### Memory

5.0 GB RAM

### Solid State Drive

Standard: 256 GB  
Optional: 1 TB

### Interface Connection

Network: 1000Base-T/100Base-TX/10Base-T,  
Wireless LAN (IEEE 802.11 b/g/n)  
Optional: Bluetooth Low Energy

### Others

Standard: USB 2.0 (Host) x1, USB 3.0 (Host) x1,  
USB 2.0 (Device) x1  
Optional: Copy Control Interface

### Paper Output Capacity (LTR, 20 lb. Bond)

Standard: 250 Sheets  
Maximum: 3,450 Sheets  
(with Staple Finisher-AB2 or Booklet Finisher-A1  
with Tri-Fold and 3rd Copy Tray Kit-A1)

### Paper Sources (LTR, 20 lb. Bond)

Standard: Dual 550-sheet Paper Cassettes,  
100-sheet Stack Bypass  
Optional: Dual 550-Sheet Paper Cassettes  
(Cassette Feeding Unit-AM1), 2,450-Sheet  
High Capacity Paper Cassette (High  
Capacity Cassette Feeding Unit-C1),  
2,700-Sheet Paper Deck  
(Paper Deck Unit-F1)

### Paper Capacity (LTR, 20 lb. Bond)

Standard: 1,200 Sheets  
Maximum: 6,350 Sheets

### Finishing Capabilities

Standard: Collate, Group  
With Options: Collate, Group, Offset, Staple, Saddle-Stitch,  
Hole Punch, Staple Free Stapling, Staple On  
Demand<sup>6</sup>

### Supported Media Types

Multi-Purpose Tray: Thin, Plain, Recycled, Color, Heavy, Coated,  
Tracing, Bond, Transparency, Label,  
Pre-punched, Letterhead, Tab, Envelope  
Paper Cassettes: Thin, Plain, Recycled, Color, Heavy, Bond,  
Transparency, Pre-punched, Letterhead,  
Envelope<sup>7</sup>

### Supported Media Sizes

Upper Cassette: Letter, Executive, Statement-R, Envelope  
[No.10 (COM10), Monarch, DL, ISO-C5],  
Custom Size (3-7/8" x 5-7/8" to 11-3/4" x  
8-1/2")  
Lower Cassette: 12" x 18", 11" x 17", Legal, Letter, Letter-R,  
Executive, Statement-R, Envelope  
[No.10 (COM10), Monarch, DL, ISO-C5],  
Custom Size (3-7/8" x 5-7/8" to 12" x 18")  
Multi-Purpose Tray: 12" x 18", 11" x 17", Legal, Letter, Letter-R,  
Executive, Statement, Statement-R,  
Envelope [No.10 (COM10), Monarch, DL,  
ISO-C5], Envelope Custom Size (3-7/8" x  
3-1/2" to 12-5/8" x 18"), Custom Size/  
Free Size (3-7/8" x 5-1/2" to 12-5/8" x 18")

### Supported Media Weights

Cassettes: 14 lb. Bond to 140 lb. Index (52 to 256 g/m<sup>2</sup>)  
Stack Bypass: 14 lb. Bond to 110 lb. Cover (52 to 300 g/m<sup>2</sup>)  
Duplexing: 14 lb. Bond to 140 lb. Index (52 to 256 g/m<sup>2</sup>)

### Print/Copy Speed (BW and Color)

C5870i: Up to 70 ppm (Letter); Up to 42 ppm  
(Letter-R); Up to 40 ppm (Legal);  
Up to 35 ppm (11" x 17")  
C5860i: Up to 60 ppm (Letter); Up to 36 ppm  
(Letter-R); Up to 34 ppm (Legal);  
Up to 32 ppm (11" x 17")  
C5850i: Up to 50 ppm (Letter); Up to 30 ppm  
(Letter-R); Up to 29 ppm (Legal);  
Up to 27 ppm (11" x 17")  
C5840i: Up to 40 ppm (Letter); Up to 24 ppm  
(Letter-R); Up to 23 ppm (Legal);  
Up to 21 ppm (11" x 17")

### Warm-up Time

From Power On: Approx. 6 Seconds<sup>8</sup>  
From Sleep Mode<sup>9</sup>  
C5870i: Approx. 7 Seconds  
C5860i/ C5850i/ C5840i: Approx. 6 Seconds  
Quick Startup Mode: Approx. 4 Seconds<sup>10</sup>

### Dimensions (W x D x H)

24-3/8" x 28-1/2" x 36-7/8" (620 x 722 x 937 mm)<sup>11</sup>

### Installation Space (W x D)

Basic: 44-7/8" x 45-3/4" (1,138 x 1,162 mm)  
(Right Cover Open with Multi-purpose  
tray extended + Cassette Drawers Open)  
Fully Configured: 73-1/2" x 45-3/4" (1,866 x 1,162 mm)  
(Staple Finisher-AB1 or Booklet Finisher-AB1  
with the extension tray extended + Paper  
Deck Unit-F1 + Cassette Drawers open)

### Weight<sup>12</sup>

C5870i: Approx. 238.1 lb. (108 kg)  
C5860i/ C5850i: Approx. 231.5 lb. (105 kg)  
C5840i: Approx. 229.3 lb. (104 kg)

## Print Specifications

### Print Resolution (dpi)

1200 x 1200

### Standard Page Description Languages

UFR II, PCL6, Adobe PS 3

### Supported File Types

PDF, TIFF, JPEG, EPS,<sup>13</sup> XPS

### Printing from Mobile Devices and Cloud-based Services

A range of standard and optional software and MEAP-based solutions (including AirPrint, Mopria, Universal Print by Microsoft®, Canon PRINT Business, and uniFLOW Online) are available to provide printing from mobile devices or internet-connected devices and cloud-based services depending on your requirements. Please contact your sales representative for further information.

### Fonts

PCL: 93 Roman, 10 Bitmap fonts, 2 OCR fonts,  
Andalé Mono WT J/K/S/T (Japanese,  
Korean, Simplified and Traditional Chinese),<sup>14</sup>  
Barcode Fonts<sup>15</sup>  
PS: 136 Roman

### Operating System<sup>16</sup>

UFR II/PS: Windows® 7/8.1/10/Server2008/  
Server2008 R2/Server2012/Server2012  
R2/Server2016/Server2019, Mac OS X  
(10.11 or later)  
PCL: Windows® 7/8.1/10/Server2008/  
Server2008 R2/Server2012/Server2012  
R2/Server2016/Server2019  
PPD: Windows® 7/8.1/10, Mac OS X(10.10 or later)

## Copy Specifications

### First-Copy-Out Time

C5870i: As fast as 2.7 seconds (BW)/  
3.7 seconds (Color)  
C5860i: As fast as 2.9 seconds (BW)/  
4.2 seconds (Color)  
C5850i: As fast as 3.3 seconds (BW)/  
4.9 seconds (Color)  
C5840i: As fast as 4.1 seconds (BW)/  
6.1 seconds (Color)

### Copy Resolution (dpi)

600 x 600

### Multiple Copies

Up to 999

### Magnification

25%-400% (1% Increments)

### Preset Reductions/Enlargements

25%, 50%, 64%, 73%, 78%, 100% (1:1), 121%, 129%,  
200%, 400%

## Scan Specifications

### Type

Single-Pass Duplexing Automatic Document Feeder

### Document Feeder Paper Capacity

Up to 200 Sheets (20 lb. Bond)

### Document Feeder Supported Media Sizes

11" x 17", Legal, Letter, Letter-R, Statement, Statement-R,  
Custom Size: 2-3/4" x 5-1/2" to 12" x 17"

### Document Feeder Supported Media Weights

Single-Sided Scanning: 13.3 lb. Bond to 80 lb. Cover (50 to 220 gsm)  
(BW, CL)  
Double-Sided Scanning: 13.3 lb. Bond to 80 lb. Cover (50 to 220 gsm)  
(BW, CL)

### Platen Acceptable Originals

Sheet, Book, 3-Dimensional Objects

### Pull Scan

Color Network Supported OS: ScanGear2 for both Twain and WIA  
Windows® 7/8.1/10/Server 2008/  
Server 2008 R2/Server 2012/  
Server 2012 R2/Server 2016

### Scan Resolution (dpi)

Scan for Copy: 600 x 600  
Scan for Send: (Push) 600 x 600 (SMB/FTP/WebDAV/  
iFAX), (Pull) 600 x 600  
Scan for Fax: 600 x 600

### Scan to Mobile Devices and Cloud-based Services

A range of solutions is available to provide scanning to compatible mobile devices and certain cloud-based services depending on your requirements.

### Scan Speed (LTR) (BW/CL)

Single-sided Scanning: 135/135 (300 dpi), 80/80 (600 dpi)  
Double-sided Scanning: 270/270 (300 dpi), 160/90 (600 dpi)

## Send Specifications

### Destination

Standard: E-mail/Internet FAX (SMTP), SMB3.0, FTP,  
WebDAV, Mail Box  
Optional: Super G3 FAX, IP Fax

### Address Book

LDAP (2,000)/Local (1,600)/Speed Dial (200)

### Send Resolution (dpi)

Push: Up to 600 x 600  
Pull: Up to 600 x 600

### Communication Protocol

File: FTP(TCP/IP), SMB3.0 (TCP/IP), WebDAV  
Email: SMTP, POP3

### File Format

Standard: TIFF, JPEG, PDF (Encrypted, Compact,  
Searchable, Apply Policy, Optimize for  
Web, User Signature, PDF A/1-b, Limited  
Color, Device Signature, User Signature),  
XPS (Compact, Searchable, Device Signature,  
User Signature), Office Open XML  
(PowerPoint, Word)

## Fax Specifications (Optional)

### Modem Speed

Super G3: 33.6 Kbps  
G3: 14.4 Kbps

### Compression Method

MH, MR, MMR, JBIG

### Resolution (dpi)

400 x 400, 200 x 400, 200 x 200, 200 x 100

### Sending/Recording Size

Statement-R to 11" x 17"

### Fax Memory

Up to 30,000 Pages (2,000 jobs)

### Speed Dials

Max. 200

### Group Dials/Destinations

Max. 199 Dials

### Sequential Broadcast

Max. 256 Addresses

### Memory Backup

Yes

**Store Specifications**

**Mail Box (Number Supported)**

100 User In-boxes, 1 Memory RX In-box, 50 Confidential Fax In-boxes, Maximum 10,000 Pages (2,000 jobs) Stored

**Advanced Box**

Communication Protocol: SMB or WebDAV

Supported

Client PC: Windows (Windows 8.1/10)

Concurrent Connections (Max.)

SMB: 64

WebDAV: 3

**Advanced Box Available Disc Space**

Approx. 16 GB (Standard HDD)

Approx. 480 GB (With Optional 1 TB HDD)

**Security Specifications**

**Authentication and Access Control**

User Authentication (Picture Login, Picture and PIN Login, Card Login, Username and Password Login, Function Level Login, Mobile Login), Department ID Authentication (Department ID and PIN Login, Function Level Login), uniFLOW Online Express<sup>17</sup> (PIN Login, Picture Login, Picture and PIN Login, Card Login, Card and PIN Login, Username and Password Login, Department ID and PIN Login, Function Level Login), Access Management System (Access Control)

**Document Security**

Print Security (Secure Print, Encrypted Secure Print, Forced Hold Printing, uniFLOW Secure Print<sup>18</sup>), Receive Data Security (Confidential Fax In-box Forwarding Received Documents Automatically), Scan Security (Encrypted PDF, Device Signature PDF/XPS, User Signature PDF/XPS, Adobe LiveCycle<sup>®</sup> Rights Management ES2.5 Integration), BOX Security (Mail Box Password Protected, Advanced Box Access Control), Send Data Security (Setting for requesting password input per transmission, Restricted E-mail/File send functions, Confirming FAX number, Allow/Restrict Fax Driver Transmissions, Allow/Restrict Sending from History, S/MIME Support), Document Tracking (Secure Watermark)

**Network Security**

TLS 1.3, IPsec, IEEE802.1X authentication, SNMP V3.0, Firewall Functionality (IP/MAC Address Filtering), Dual Network Support (Wired LAN/Wireless LAN, Wired LAN/Wired LAN), Disabling Unused Functions (Enabling/Disabling Protocols/Applications, Enabling/Disabling Remote UI, Enabling/Disabling USB Interface), G3 FAX separation from LAN, USB Port separation from LAN, Prohibit the execution of files stored in Advanced Box in the MFP, Scan and Send-Virus Concerns for E-mail Reception

**Device Security**

Protecting SSD Data [SSD Data Encryption (FIPS140-2 Validated), SSD Lock], Standard SSD Initialize, Trusted Platform Module (TPM), Job Log Conceal Function, Protecting MFD Software Integrity, Checking MFD Software Integrity (Verify System at Startup, Runtime Intrusion Detection)

**Device Management and Auditing**

Administrator Password, Digital Certificate and Key Management, Audit Log, Cooperating with External Security Audit System (Security Information and Event Management), Image Data Logging, Security Policy Setting

**Environmental Specifications**

**Operating Environment**

Temperature: 50 to 86°F

Humidity: 20 to 80% RH (Relative Humidity)

**Power Requirements**

C5870i/ C5860i/ 110-127 V, 60 Hz, 12 A

C5850i: 110-127 V, 60 Hz, 10 A

C5840i: 110-127 V, 60 Hz, 10 A

**Power Consumption**

Maximum: Approx. 1,800 W

Standby: Approx. 56.1 W<sup>19</sup>

Sleep Mode: Approx. 0.8 W<sup>20</sup>

Typical Electricity Consumption (TEC) Rating<sup>21</sup>

C5870i: 0.86 kWh

C5860i: 0.71 kWh

C5850i: 0.57 kWh

C5840i: 0.47 kWh

**Standards**

ENERGY STAR<sup>®</sup> Certified

Rated EPEAT<sup>®</sup> Gold

**Consumables**

**Toner<sup>22</sup>**

GPR-61L Toner BK/C/M/Y

GPR-61L Toner C/M/Y

**Toner Yield (Estimated @ 5% Coverage)**

GPR-61L Toner

BK: 71,000 Pages

GPR-61L Toner

C/M/Y: 60,000 Pages

GPR-61L Toner

C/M/Y: 26,000 Pages

<sup>1</sup> Subscription to a third-party cloud service required. Subject to third-party cloud service provider's Terms and Conditions.

<sup>2</sup> Third-party SIEM system required. Subject to third-party SIEM system's Terms and Conditions. Canon cannot ensure compatibility with all third-party SIEM systems.

<sup>3</sup> This feature is off by default and must be turned on by the user. Warm-up times are affected once turned on.

<sup>4</sup> Requires additional option.

<sup>5</sup> For current EPEAT rating (Gold/Silver/Bronze), please visit [www.epeat.net](http://www.epeat.net).

<sup>6</sup> Finishing capabilities vary depending on the options connected.

<sup>7</sup> Envelope Feeder Attachment (standard) is required.

<sup>8</sup> Time from device power-on, until copy ready (not print reservation).

<sup>9</sup> Time from exiting Sleep mode to when printing is operational.

<sup>10</sup> Time from device power-on to when the copy icon appears and is enabled to operate on the touch panel display.

<sup>11</sup> Includes main unit and standard ADF.

<sup>12</sup> Includes main unit, consumables, and Cassette Feeding Unit-AQ1.

<sup>13</sup> EPS can be printed directly only from the Remote User Interface.

<sup>14</sup> Requires the optional PCL International Font Set-A1.

<sup>15</sup> Requires the optional Barcode Printer Kit-D1.

<sup>16</sup> Other operating systems and environments, including AS/400, UNIX, Linux, and Citrix may be supported. Some of these solutions are chargeable. SAP Device Types are available via the SAP Market Place. For more information, contact your sales representative.

<sup>17</sup> No charge for this solution; however, activation is required.

<sup>18</sup> Requires uniFLOW Online/uniFLOW.

<sup>19</sup> Reference Value (measured one unit).

<sup>20</sup> 0.8 W Sleep mode not available in all circumstances due to certain settings.

<sup>21</sup> Based on ENERGY STAR Product Specification for Imaging Equipment Version 3.0.

<sup>22</sup> GPR-61L Toner also available for Color (C, M, Y). Yield (estimated @ 5% coverage) is 26,000 images.



Canon imageRUNNER ADVANCE DX C5870i  
Outstanding 70-ppm A3 Color MFP

Canon imageRUNNER ADVANCE DX C5860i  
Outstanding 60-ppm A3 Color MFP

Canon imageRUNNER ADVANCE DX C5840i  
Outstanding 40-ppm A3 Color MFP

As an ENERGY STAR<sup>®</sup> Partner, Canon U.S.A., Inc. has certified these models as meeting the ENERGY STAR energy efficiency criteria through an EPA recognized certification body. ENERGY STAR and the ENERGY STAR mark are registered U.S. marks. Canon, imageRUNNER, imagePASS, and the GENUINE logo are registered trademarks or trademarks of Canon Inc. in the United States and may also be registered trademarks or trademarks in other countries. Canon products offer certain security features, yet many variables can impact the security of your devices and data. Canon does not warrant that use of its features will prevent security issues. Nothing herein should be construed as legal or regulatory advice concerning applicable laws; customers must have their own qualified counsel determine the feasibility of a solution as it relates to regulatory and statutory compliance. McAfee and the McAfee logo are trademarks of McAfee LLC in the US and/or other countries. All other referenced product names and marks are trademarks of their respective owners. All features presented in this brochure may not apply to all Series and/or products and may be optional; please check with your Canon Authorized Dealer for details. Product shown with optional accessories. Canon U.S.A. does not provide legal counsel or regulatory compliance consultancy, including without limitation, Sarbanes-Oxley, HIPAA, GLBA, Check 21 or the USA Patriot Act. Each customer must have its own qualified counsel determine the advisability of a particular solution as it relates to regulatory and statutory compliance. Specifications and availability subject to change without notice. Not responsible for typographical errors.  
©2022 Canon U.S.A., Inc. All rights reserved.

Federal Law prohibits copying of certain documents. Violators may be subject to penalties. We suggest that you check with your own legal counsel. Canon U.S.A., Inc. and Canon Canada, Inc. intend to cooperate with Law Enforcement Agencies in connection with claims of unauthorized copying.



usa.canon.com



To learn about Canon's many awards, visit [usa.canon.com/awards](http://usa.canon.com/awards).